

**Anti-HSF2 Antibody**  
**Catalog # ABO10922****Specification**

---

**Anti-HSF2 Antibody - Product Information**

|                   |                        |
|-------------------|------------------------|
| Application       | WB, IHC-P              |
| Primary Accession | <a href="#">Q03933</a> |
| Host              | Rabbit                 |
| Reactivity        | Human, Mouse, Rat      |
| Clonality         | Polyclonal             |
| Format            | Lyophilized            |

**Description**

Rabbit IgG polyclonal antibody for Heat shock factor protein 2(HSF2) detection. Tested with WB, IHC-P in Human;Mouse;Rat.

**Reconstitution**

Add 0.2ml of distilled water will yield a concentration of 500ug/ml.

**Anti-HSF2 Antibody - Additional Information**

**Gene ID** 3298

**Other Names**

Heat shock factor protein 2, HSF 2, Heat shock transcription factor 2, HSTF 2, HSF2, HSTF2

**Calculated MW**

60348 MW KDa

**Application Details**

Immunohistochemistry(Paraffin-embedded Section), 0.5-1 µg/ml, Rat, Human, Mouse, By Heat<br>Western blot, 0.1-0.5 µg/ml, Human, Rat, Mouse<br>

**Subcellular Localization**

Cytoplasm . Nucleus . Cytoplasmic during normal growth and moves to the nucleus upon activation.

**Protein Name**

Heat shock factor protein 2(HSF 2)

**Contents**

Each vial contains 5mg BSA, 0.9mg NaCl, 0.2mg Na<sub>2</sub>HPO<sub>4</sub>, 0.05mg Thimerosal, 0.05mg NaN<sub>3</sub>.

**Immunogen**

A synthetic peptide corresponding to a sequence in the middle region of human HSF2(82-102aa KQERDGPVEFQHPYFKQGQDD), identical to the related mouse sequence, and different from the related rat sequence by one amino acid.

**Purification**

Immunogen affinity purified.

**Cross Reactivity**

No cross reactivity with other proteins

**Storage**

**At -20°C for one year. After reconstitution, at 4°C for one month. It can also be aliquotted and stored frozen at -20°C for a longer time. Avoid repeated freezing and thawing.**

**Sequence Similarities**

Belongs to the HSF family.

**Anti-HSF2 Antibody - Protein Information**

**Name** HSF2

**Synonyms** HSTF2

**Function**

DNA-binding protein that specifically binds heat shock promoter elements (HSE) and activates transcription. In higher eukaryotes, HSF is unable to bind to the HSE unless the cells are heat shocked.

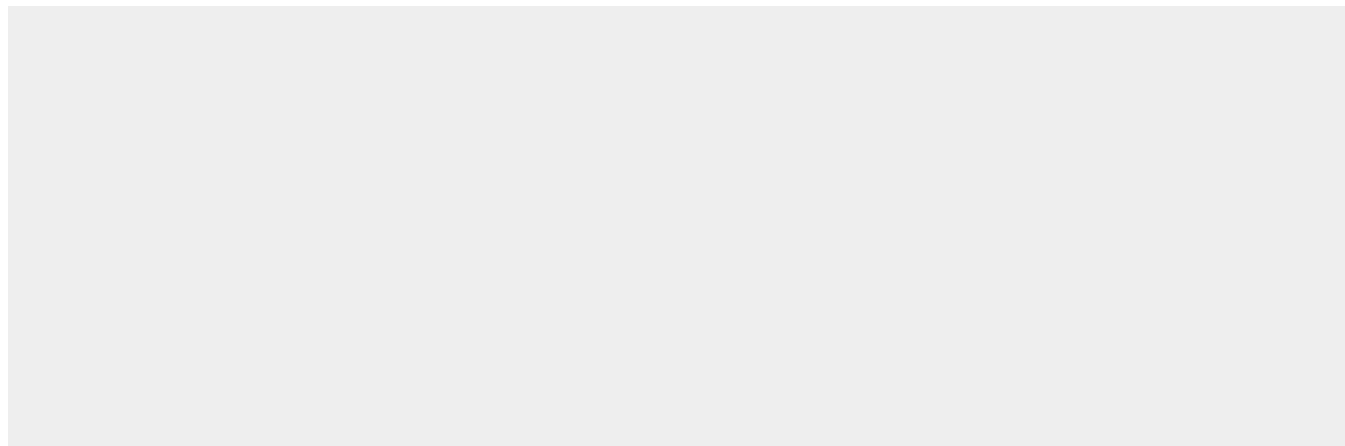
**Cellular Location**

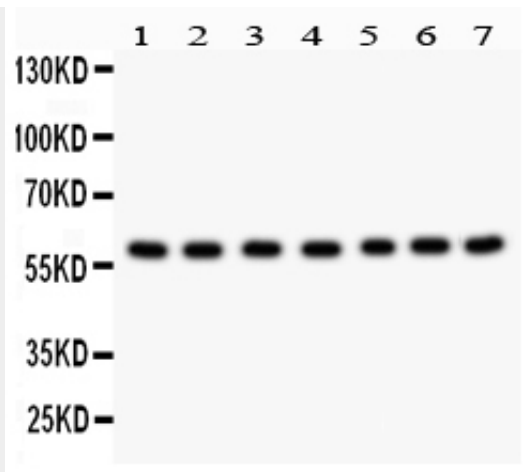
Cytoplasm. Nucleus. Note=Cytoplasmic during normal growth and moves to the nucleus upon activation

**Anti-HSF2 Antibody - Protocols**

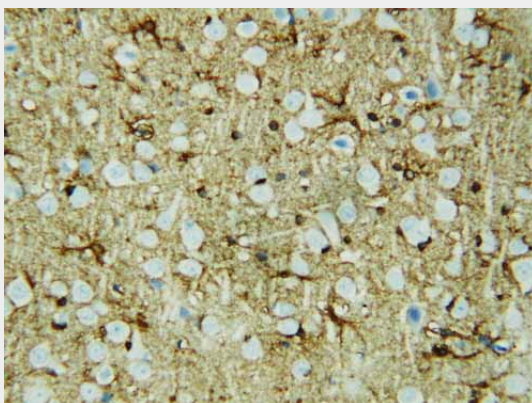
Provided below are standard protocols that you may find useful for product applications.

- [Western Blot](#)
- [Blocking Peptides](#)
- [Dot Blot](#)
- [Immunohistochemistry](#)
- [Immunofluorescence](#)
- [Immunoprecipitation](#)
- [Flow Cytometry](#)
- [Cell Culture](#)

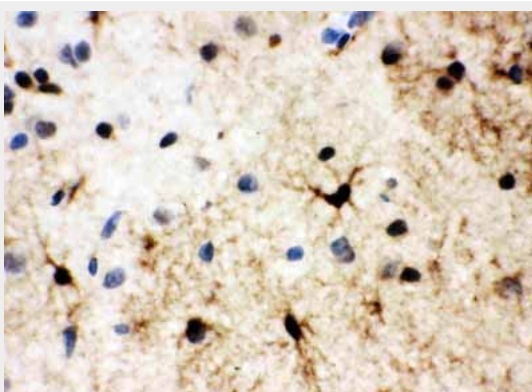
**Anti-HSF2 Antibody - Images**



Anti-HSF2 antibody, ABO10922, Western blotting All lanes: Anti HSF2 (ABO10922) at 0.5ug/ml  
Lane 1: Rat Kidney Tissue Lysate at 50ug Lane 2: Rat Spleen Tissue Lysate at 50ug Lane 3: 293T Whole Cell Lysate at 40ug Lane 4: MCF-7 Whole Cell Lysate at 40ug Lane 5: JURKAT Whole Cell Lysate at 40ug Lane 6: A549 Whole Cell Lysate at 40ug Lane 7: CEM Whole Cell Lysate at 40ug  
Predicted bind size: 60KD  
Observed bind size: 60KD



Anti-HSF2 antibody, ABO10922, IHC(P) IHC(P): Rat Brain Tissue



Anti-HSF2 antibody, ABO10922, IHC(P) IHC(P): Rat Brain Tissue

### Anti-HSF2 Antibody - Background

HSF2(HEAT-SHOCK TRANSCRIPTION FACTOR 2), also called HEAT-SHOCK FACTOR 2, as well as the related gene HSF1, encodes a protein that binds specifically to the heat-shock element and has homology to HSFs of other species. The International Radiation Hybrid Mapping Consortium maps the HSF2 gene to chromosome 6. Mouse Hsf2 was expressed in all 3 embryonic layers at embryonic

day 7.5 and that the head fold was strongly stained at embryonic day 8.5. In adults, Hsf2 expression is detected in spermatocytes and spermatogonia, but not in elongated spermatids, spermatozoa, or Sertoli cells. Hsp70i bookmarking is mediated by a transcription factor called HSF2, which binds this promoter in mitotic cells, recruits protein phosphatase-2A, and interacts with the CAPG subunit of the condensin enzyme to promote efficient dephosphorylation and inactivation of condensin complexes in the vicinity, thereby preventing compaction at this site. And Hsf2-null mice were born at the expected mendelian ratio but had brain abnormalities and meiotic and gametogenic defects in both genders.